



THE FIRST REGIONAL ENERGY OBSERVER IN ROMANIA

Workshop

Dezvoltarea locală cu ajutorul energiei regenerabile

Bacău, 28 octombrie 2015

ACCESS OF LOCAL AUTHORITIES TO ENERGY QUALITY DATA

- Local authorities play a crucial role in mitigating climate change, especially since 80% of energy consumption and emissions of CO₂ are believed to be due to activities in their area of influence.
- ANERGO provides technical support and coordination for the development of Sustainable Energy Emission Inventories and Action Plans developed and implemented by local authorities in Alba County
- ANERGO supports communities that have joined or wish to adhere to the Covenant of Mayors and who are interested in achieving the EU 20-20-20 goals through sustainable local development.



MODELS OF COLLABORATION PROPOSED BY ANERGO ENERGY OBSERVER



ACCESS OF LOCAL AUTHORITIES TO ENERGY QUALITY DATA

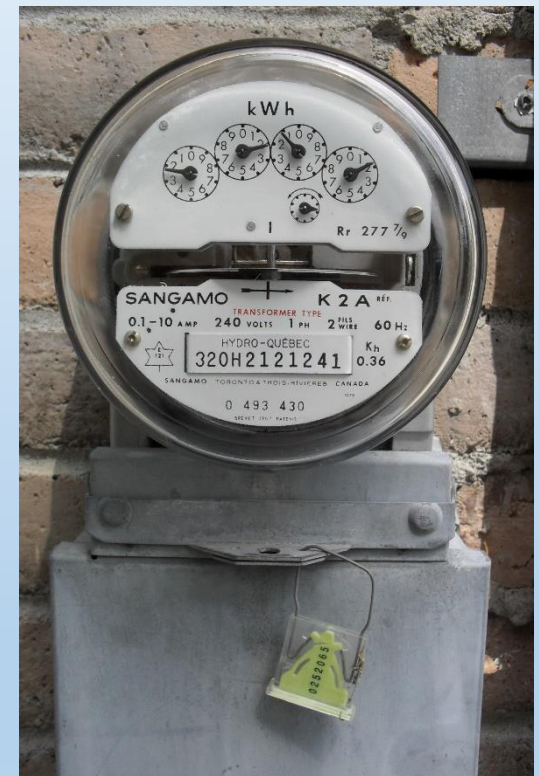
- **ANERGO will request, on behalf of the partner local authority, energy data from any data provider that can transmit information on the territory administered by the local authority including data on electricity consumption, natural gas consumption, transport data and others**
- **Partner local authorities will provide the Observatory with energy data related to its own buildings and services.**
- **Based on these data, partner local authorities will receive on demand, free of charge, energy reports for their own consumption**

Modele reciproc advantageous



ACCESS OF LOCAL AUTHORITIES TO ENERGY QUALITY DATA

- ANERGO has begun a process to help partner local authorities access online services to manage their electricity and methane gas consumption easily and quickly
- Several consumer sites or customer accounts can be accessed centrally, thus facilitating quick access for local authority personnel to manage Sustainable Energy Action Plans (PAED) to energy consumption (electricity and natural gas) in Last 12 months



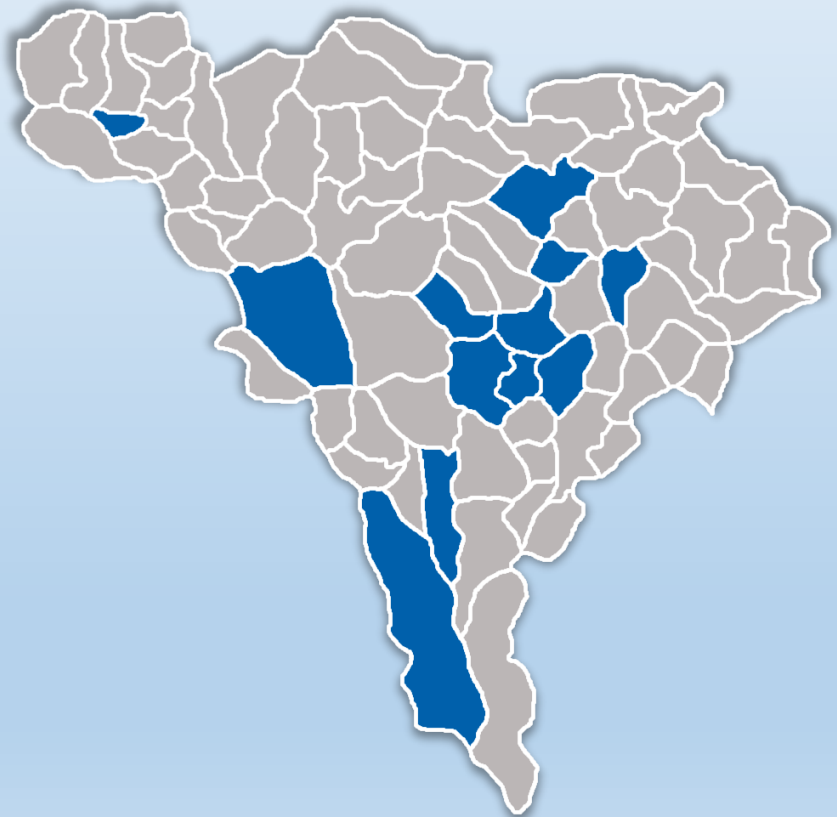
ACCESS OF LOCAL AUTHORITIES TO ENERGY QUALITY DATA

- The Energy Observatory will process the primary data received from energy data providers and partner local authorities.
- The processing of energy data involves correction, correlation and adaptation processes to the reporting formats required by the Mayors' Convention and energy consumption inventories and CO₂ related emissions.
- Through the data management process the required level of confidentiality is ensured.
- On the basis of the energy data obtained, the consumption trends can be estimated and the impact on the environment can be assessed.

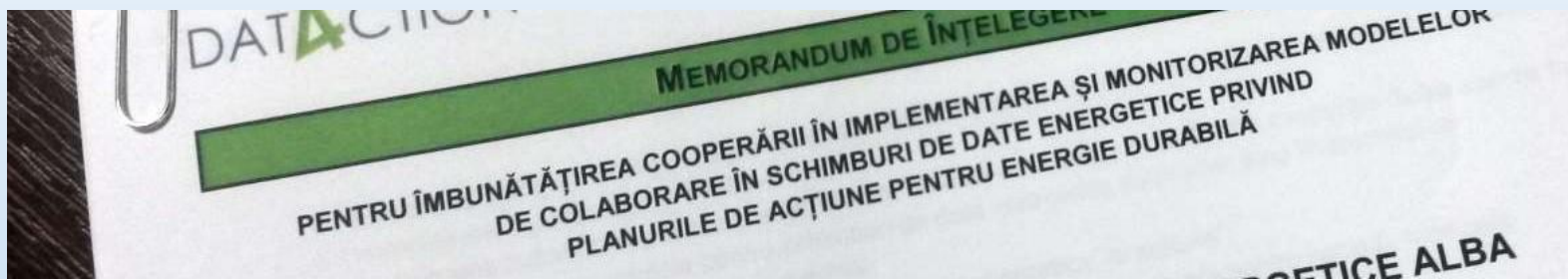


ANERGO COLLABORATION AGREEMENTS WITH LOCAL AUTHORITIES

- **To date, there are 12 local authorities in Alba County with which ANERGO has cooperation agreements:**
- **Alba Iulia Municipality**
- **Aiud municipality**
- **Teius City**
- **Zlatna City**
- **Cugir City**
- **Berghin commune**
- **Ciugud commune**
- **commune Crăciunelu de Jos**
- **commune Ighiu**
- **Pianu commune**
- **Sântimbru commune**
- **Poiana Vadului commune**



AGREEMENTS ESTABLISHED BY ANERGO WITH ENERGY DATA SUPPLIERS



- The Energy Observatory currently has collaboration agreements with the following data providers:
- ELECTRICITY DISTRIBUTION SUCCESS - ALBE SDE (FDEE TRANSILVANIA SOUTH)
- REGIONAL DIRECTORATE FOR ALBA STATISTICS
- THE ENVIRONMENTAL PROTECTION AGENCY APM ALBA
- THE PUBLIC TRANSPORT SOCIETY - STP ALBA IULIA
- Collaborative Agreements Under Signing:
- E.ON DISTRIBUTION ROMANIA - Tg. Mures

CONSUMPTION MONITORING FOR INDIVIDUAL CONSUMERS

- The Energy Observatory provides consumers with the tools to record their consumption and will provide customized reports in line with consumption trends
- Online registration at:
www.energo.alea.ro/consumul-tau

ANERGO OBSERVATORUL ENERGETIC ALBA

Alba Iulia

DETALII PRIVIND LOCUINȚA

Tipul locuinței: Alba Iulia

Numărul de persoane din locuință: Casă

Tipul sistemului de încălzire principal: 4
Centrală termică pe gaz

Acesta este fișierul dvs. de date energetice. Completați sau modificați numai celula selectată pentru a modifica conținutul unei celule selectate și apăsați **Enter** pentru a salva automat. În tabelele de mai jos introduceți consumurile de pe facturile dvs. folosiți semnul virgulă (,) Pentru ajutor, modificări sau sugestii, trimiteți un e-mail la anergo@alea.ro

Opțional: Completați consumurile dvs. totale (însurate) din anul 2014

2014	ENERGIE ELECTRICĂ		GAZ METAN		APĂ POTABILĂ	
LUNA	kWh	LEI	kWh	LEI	m3	LEI
Total 2014	2200	1320	21600	2800	36	280

Completați în următorul tabel consumul dvs. lunar și costurile:

2015	ENERGIE ELECTRICĂ		GAZ METAN		APĂ POTABILĂ	
LUNA	kWh	LEI	kWh	LEI	m3	LEI
Januarie	180	108	3400	440	10	80
Februarie	192	115	2900	380	9	72
Martie	170	104	2300	300	11	88
Aprilie	160	96	1600	210	11	88
Mai	177	110	650	90	9	72
Iunie	201	125	1000	130	15	120
Iulie						
August						
Septembrie						
Octombrie						
November						
Decembrie						
Total 2015	1080	658				

FOR DETAILS

PLEASE GO ON...

- <http://anergo.alea.ro/autoritati-locale>
- <http://anergo.alea.ro/furnizori-de-date>

FOR TECHNICAL ASSISTANCE AND COLLABORATION AGREEMENTS...

- **E-mail:** anergo@alea.ro

THANK YOU FOR YOUR ATTENTION!

Florin Andronescu
The Local Energy Agency Alba

E-mail: florin@alea.ro

Website: www.alea.ro